

Report to Safer Cleaner Greener

Date of meeting: 15th July 2014

Subject: Anti-Social Behaviour Case Review Model

Officer contact for further information:
Caroline Wiggins Community Safety Manager

Committee Secretary: Adrian Hendry



Recommendations/Decisions Required:

To note the progress made to develop and launch a County-wide approach to the Anti-Social Behaviour Case Review model, prior to the anticipated implementation in October 2014.

Report:

BACKGROUND:

1. The Anti-social Behaviour, Crime and Policing Act 2014 received royal assent on 13 March 2014. The act is designed to introduce simpler, more effective powers to tackle anti-social behaviour and provide better protection for victims and communities.

REPORT

2. Within the Act are new responsibilities for the relevant bodies including the District Council, the police, clinical commissioning groups, health providers and registered social housing providers in each local government area to carry out reviews of our responses to anti-social behaviour.

3. The Anti-Social behaviour Review model is a mechanism for victims of anti-social behaviour to require action from the relevant authorities, starting with a review of their case. Victims of anti-social behaviour will be able to use the model in the event that they feel that agencies have not taken sufficient action in respect of their complaint. There is now a duty to undertake a case review when someone requests one and where the case meets a locally defined threshold.

4. To ensure agencies take a more joined up, problem solving approach, Safer Essex have agreed to develop a consistent County-wide approach across all agencies who are involved in the use of the new legislation; providing victims of anti-social behaviour with a coherent and effective response regardless of where they live in Essex.

5. It is important to note that the District Council will play a key pivotal role in this process by taking the lead over all agencies, including Essex Police, in the recording, collating and responding to all Anti-social Behaviour Review requests from the public.

6. The model that Safer Essex has agreed to adopt has been developed largely based on the Richmond model (part of the national pilot scheme),

7. The new act allows for local areas to set their own threshold to accommodate local needs and resources. Safer Essex have set a county wide threshold of 3 incidents of ASB within the last 6 months where the victim considers no action had been taken.

8. It was also agreed to adapt the Anti-Social Behaviour Case Review model to include a lower threshold where the victim perceives the ASB to be of a Hate Crime nature to 1 incident within last 6 months where the victim considers no action has been taken.

9. Below are the stages involved in the case review process; a flow chart outlining the procedures is attached:

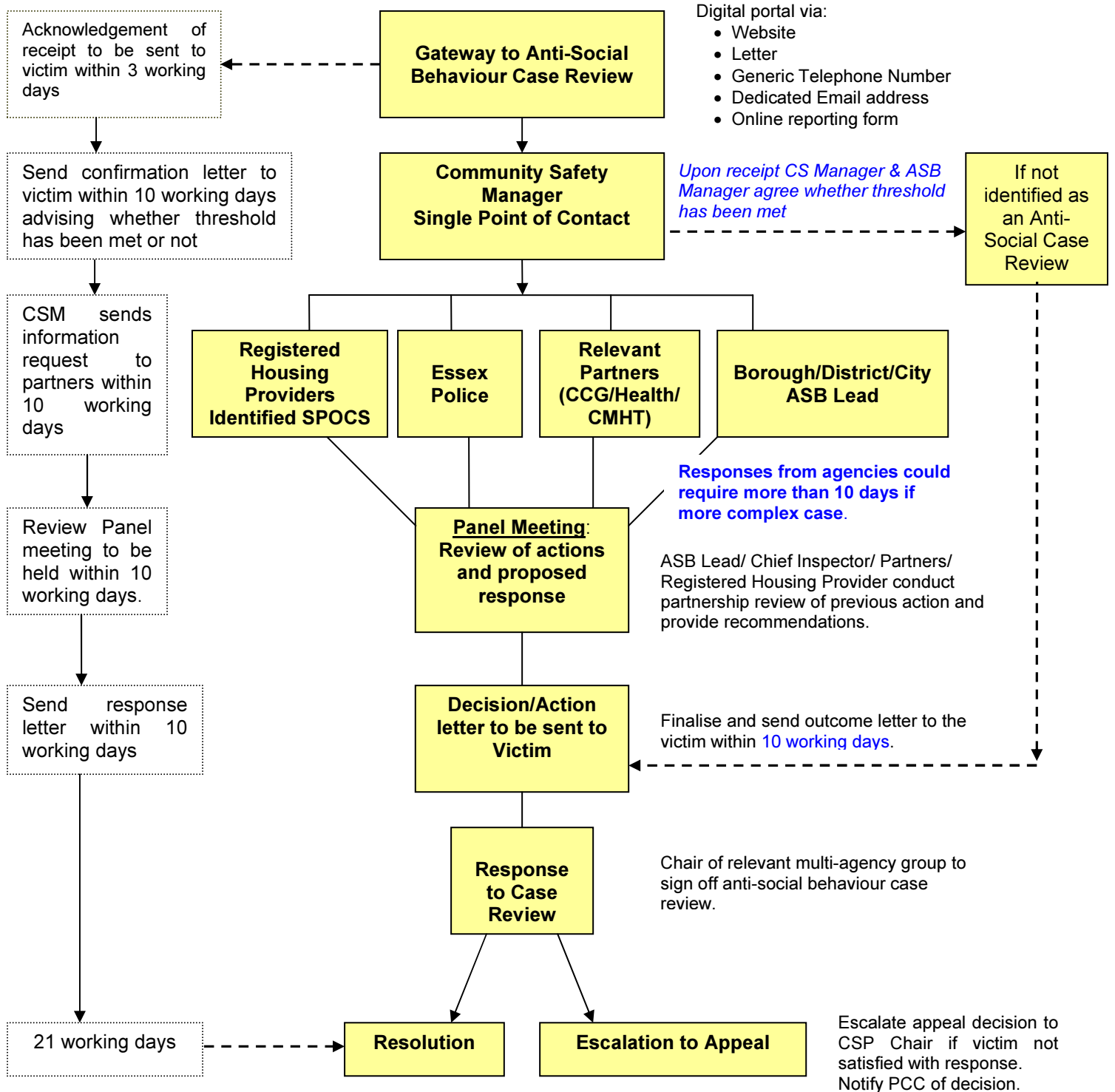
- *Risk* – it was agreed to use the risk based harm model already used in Essex to assess victim's vulnerabilities. This is very similar to one already in use by the Community Safety Team at the council.
- *Reporting Forms* – on-line reporting forms are being produced and are to be hosted on local Council websites. These forms will be available in hard copy format if required.
- *Standardised Letters* – will be produced to be adopted by local areas.
- *Appeal* – victims have the right to appeal the decision of the review panel and as such these will be sent to the Chair of the relevant Community Safety Partnership in the first instance and notified to PCC's office.
- *Resolution* – it was agreed that although the pathway to resolution could be standardised, it would prove very difficult for resolutions to be. Over time this may prove easier to achieve but until there is a better understanding of the impact this would not be progressed at this time.
- *Role of the Police and Crime Commissioner (PCC)* - the PCC will be notified if the Case Review reaches appeal stage, rather than resolution, by the local CSP Chair.

10. The Public Communications Strategy is being developed by the Office of the Police and Crime Commissioner through the Essex Communications Officers Group, providing a pan-Essex strategic view and approach to both local and County-wide communications, relating to the Essex Community Trigger.

11. Ultimately this strategy will aim to achieve County-wide publicity to introduce the Case Review's being complemented by local publicity, press releases and website site information identifying local contacts and specific details for each District and Unitary authority, including dedicated telephone numbers and web pages.

ESSEX ANTI-SOCIAL BEHAVIOUR CASE REVIEW MODEL

Threshold: ASB reported 3 times in the previous 6 months period and the victim feels that there has been no action taken, unless defined as Hate Crime where trigger will be activated if ASB reported 1 time in the previous 6 months and the victim feels like no action has been taken.



Reason for decision:

Options considered and rejected:

Consultation undertaken:

Resource implications:

Budget provision:

Personnel:

Land:

Community Plan/BVPP reference:

Relevant statutory powers:

Background papers:

Environmental/Human Rights Act/Crime and Disorder Act Implications:

Key Decision reference: (if required)